

CATHERINE PERRY BRYAN MITIGATION AREA

Brazoria County, Texas (USACE Galveston District)

SERVICE AREA

PRIMARY
San Bernard 12090403

SECONDARY
East Matagorda Bay 12090405

COUNTIES

Matagorda
Wharton
Fort Bend
Austin
Colorado

HABITAT

Tidal Fringe Wetlands
- Estuarine Emergent Wetlands (EEM)
- Salt Marsh

Riverine Non-Forested Wetlands

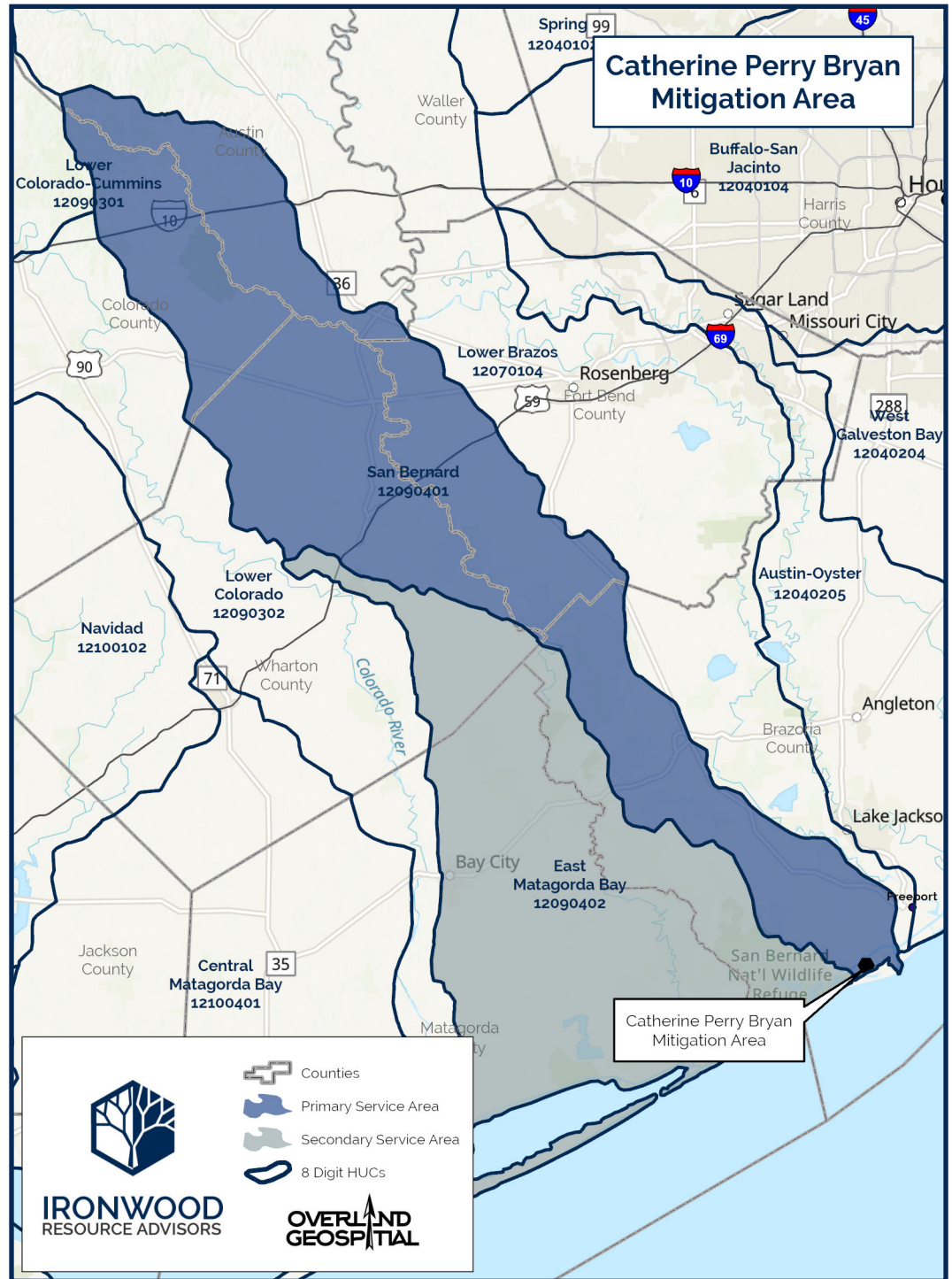
Freshwater Emergent (PEM)

STATUS

Available PRM Acreage

PROJECT SIZE

300+ Acres



IRONWOOD
RESOURCE ADVISORS